

Archaeological Survey  
Ballintober Castle  
Ballintober, Co. Roscommon  
Ireland

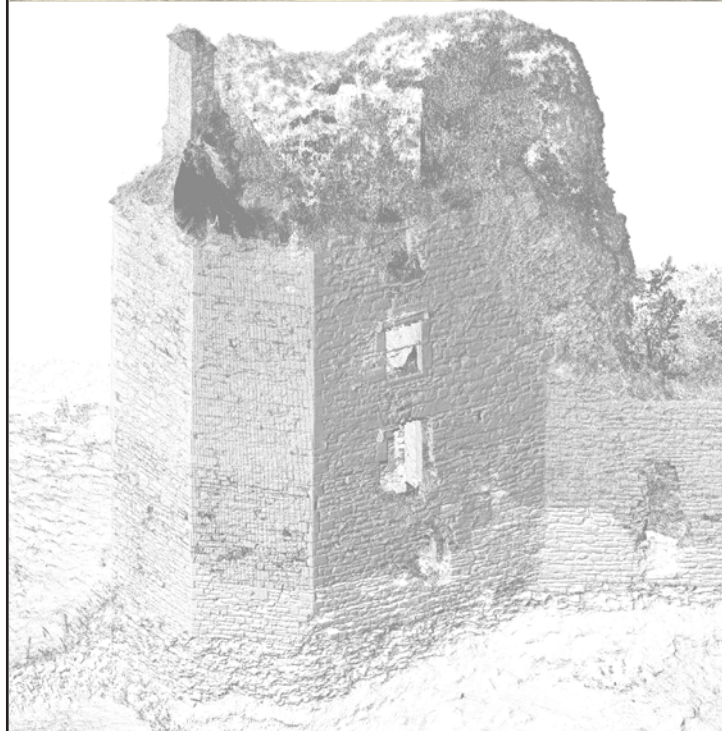
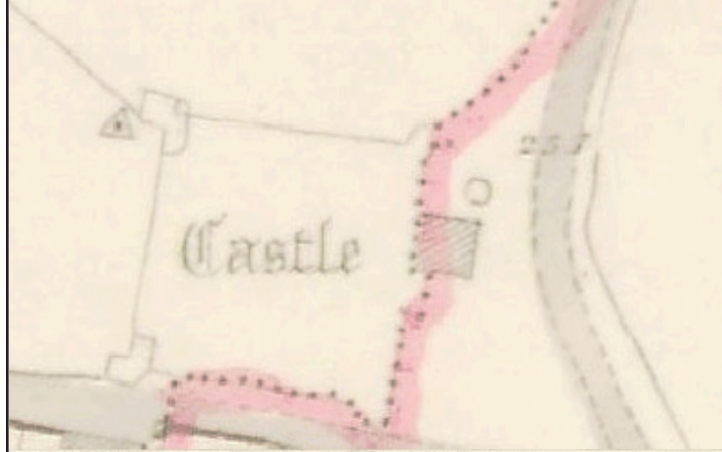
RO027-048002-

Niall Brady

for

Castle Studies Trust  
2014 Grant award

Figures 18-34



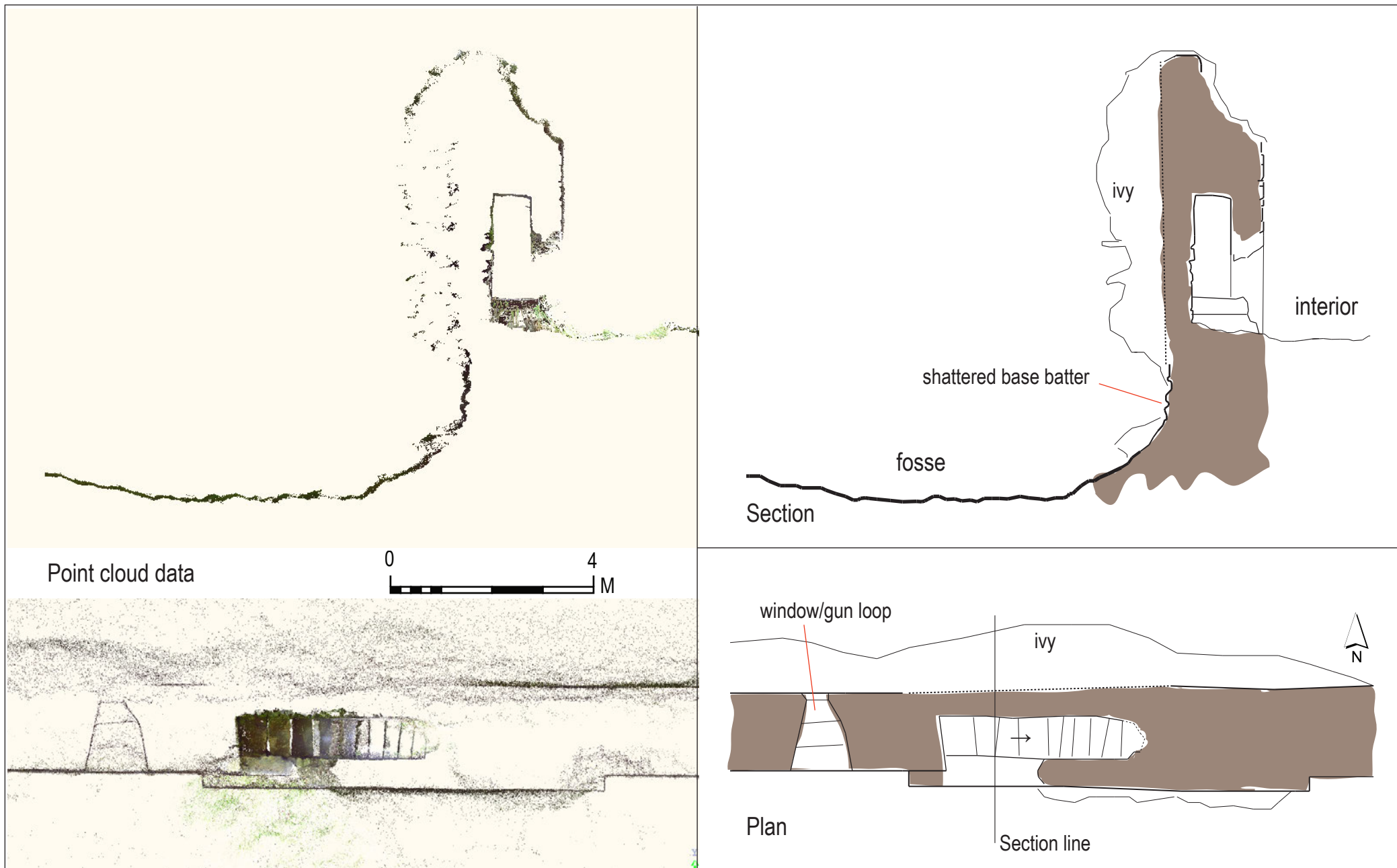


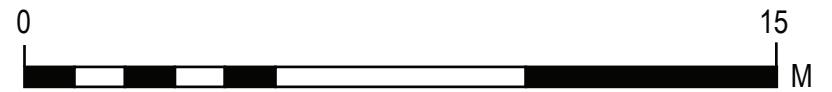
Figure 18: Plan and section of the mural stairs on the north wall

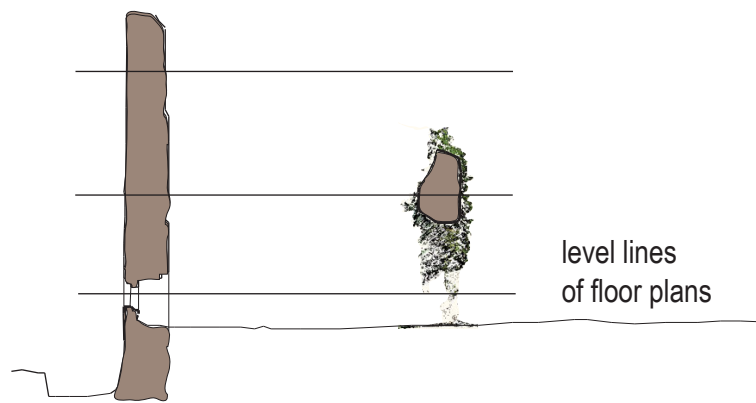
Note: The figure shows the point cloud data acquired by laser scan survey on the left side, and the archaeological interpretation on the right side.



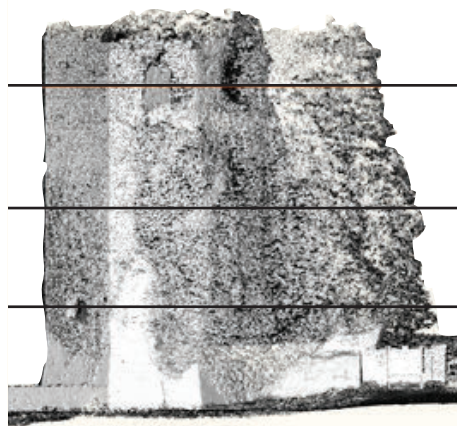


Figure 19: Isometric view through the Southwest tower, looking southwest





Long Section A-A1



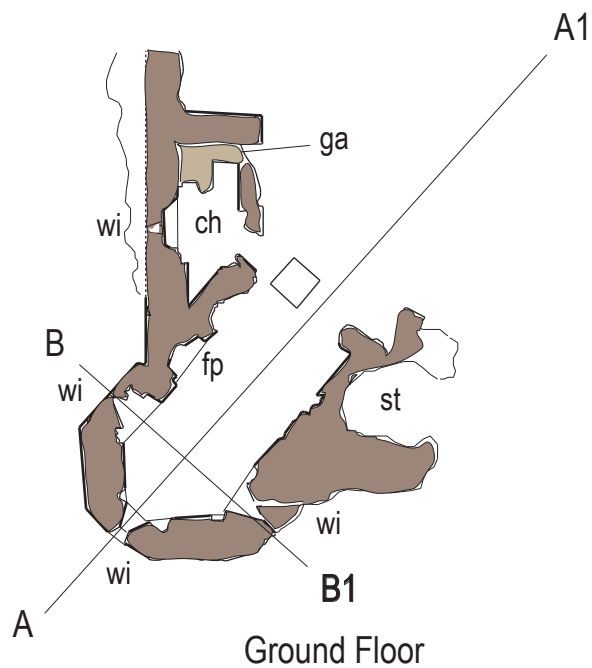
Second Floor

First Floor

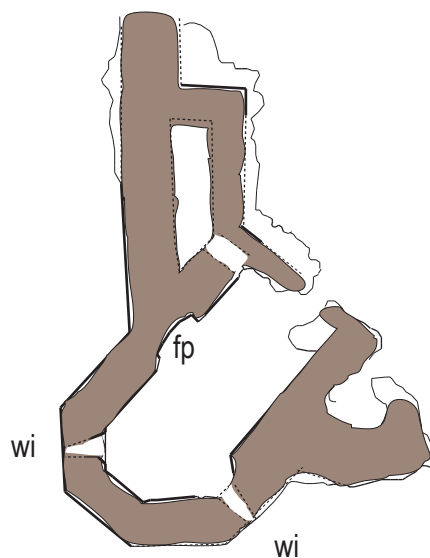
Ground Floor



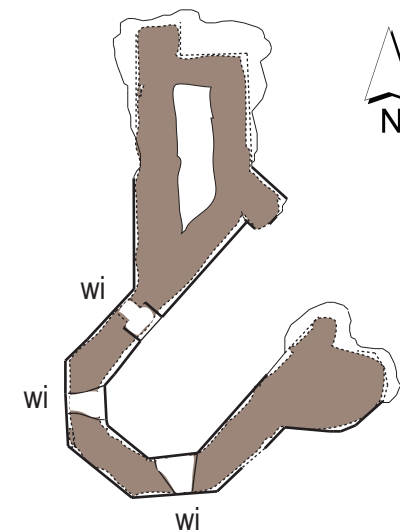
Cross Section B-B1



Ground Floor



First Floor



Second Floor

Notes:

ch - chamber

fp - fireplace

ga - garderobe

st - stairwell

wi - window

Figure 20: Southwest corner tower, floor plans and sections





recess for  
Second-Floor  
joists

First-Floor  
fireplace

recess for First-  
Floor joists

arched recesses  
for Ground-Floor  
ceiling

West-facing elevation view of main chamber



garderobe details lay  
outside the scanned zone

West-facing elevation view of north chamber



Figure 21: Ortho-images showing interior perspective of Southwest tower

Note: Within the north chamber, survey was only possible on the ground floor level, but the result reveals the detail of the main unit and the base of its barrel-vaulted ceiling.



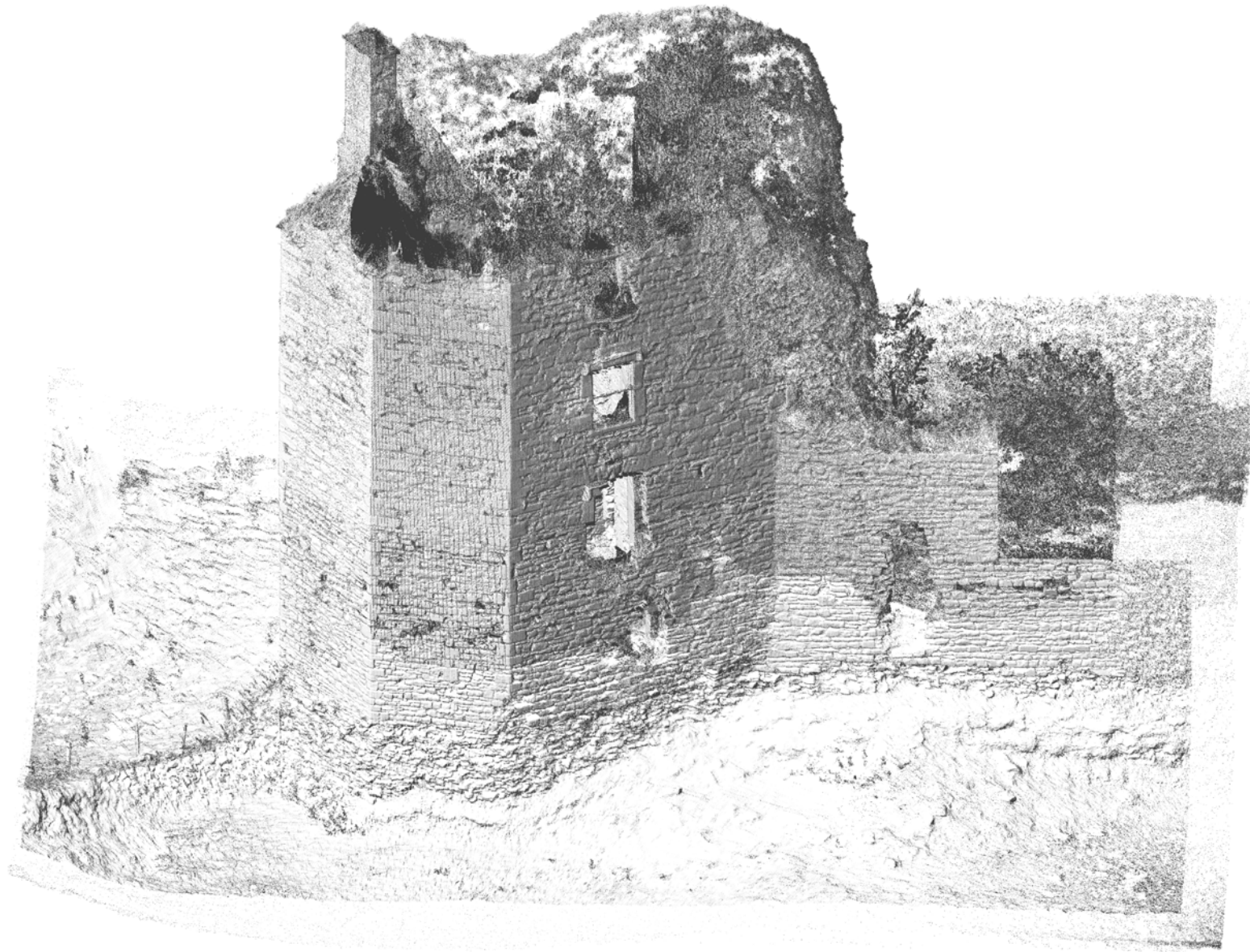


Figure 22: Isometric view of the Northwest tower, looking east

Note: this view and Figure 25 were processed in Bentley Pointools™, which proved less easy to work in than Realworks™, which was used for processing the cloud point data in the other figures. The lighter colour on the base batter is a processing issue and does not exist in reality.



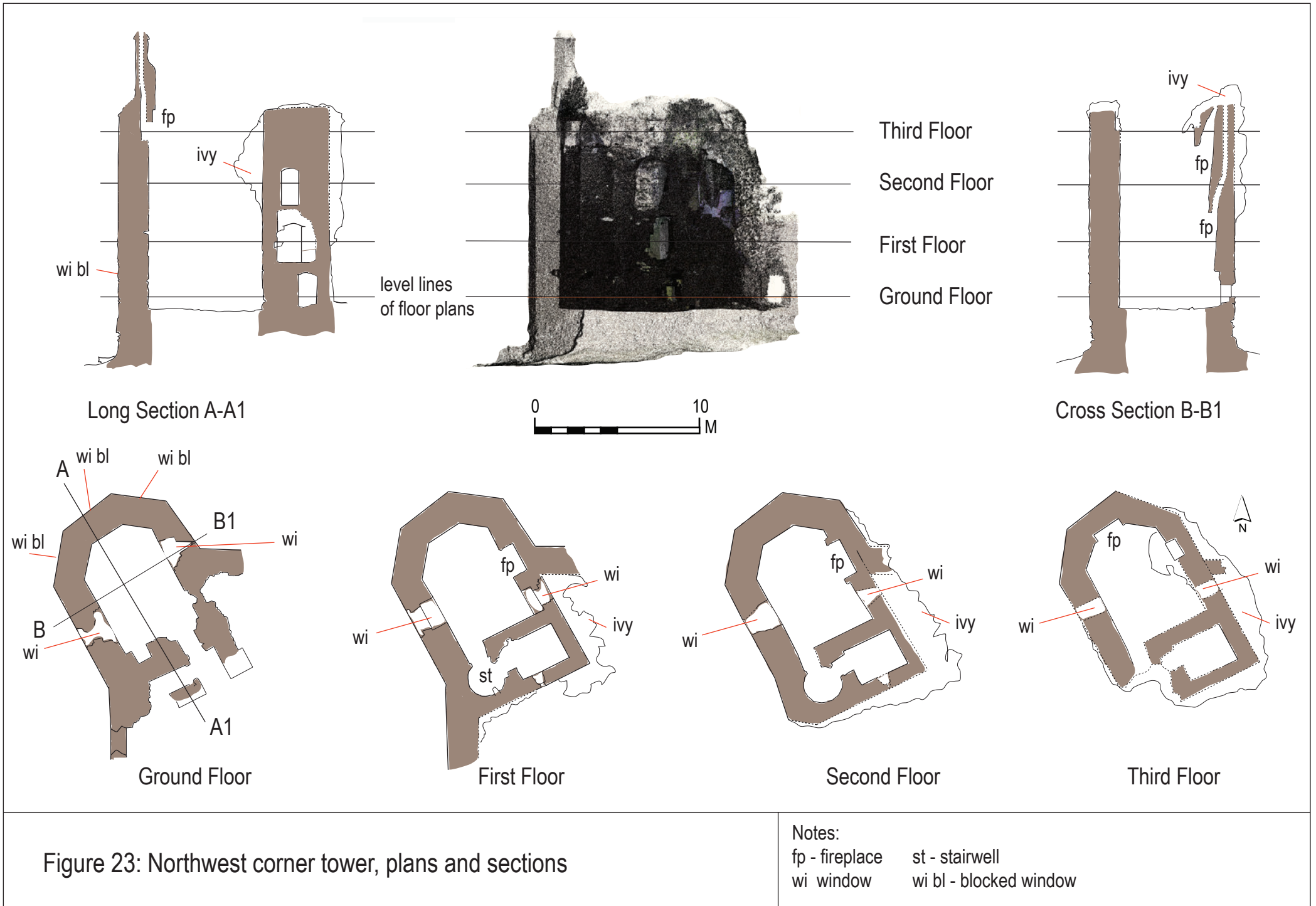


Figure 23: Northwest corner tower, plans and sections

Notes:  
 fp - fireplace    st - stairwell  
 wi - window      wi bl - blocked window

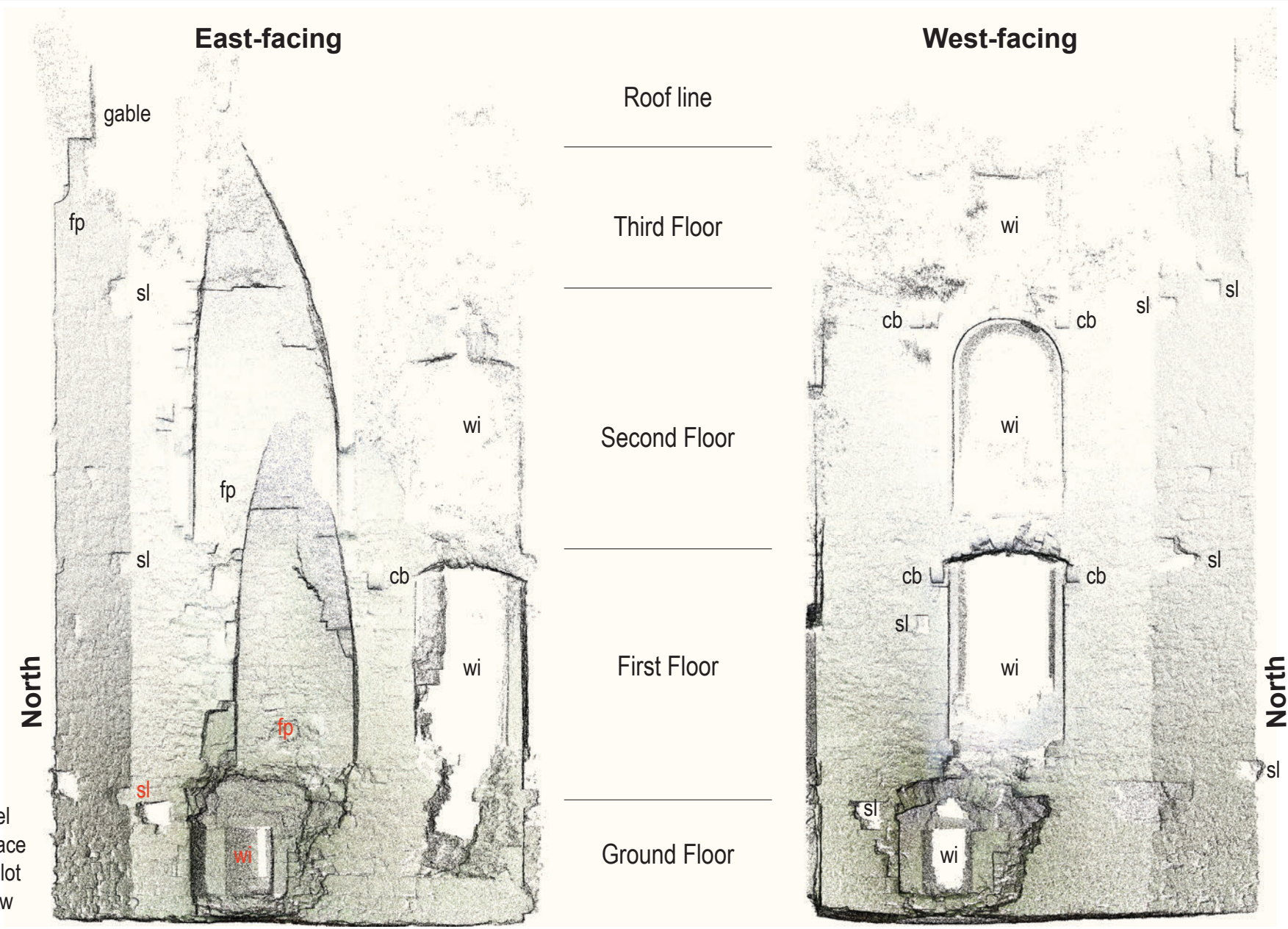


Figure 24: Ortho images showing interior perspective of main chamber in Northwest tower



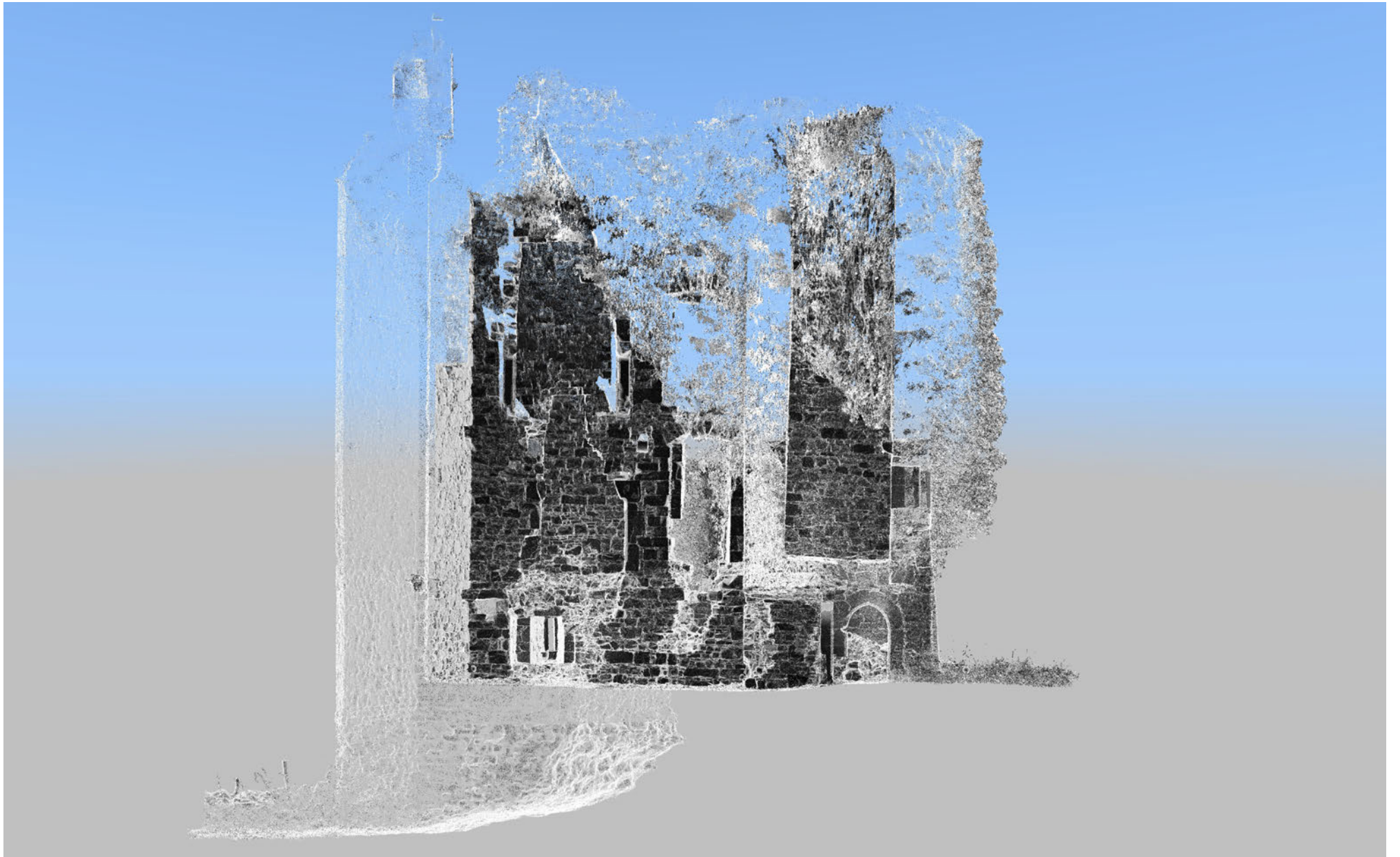


Figure 25: Long-section view through the Northwest tower



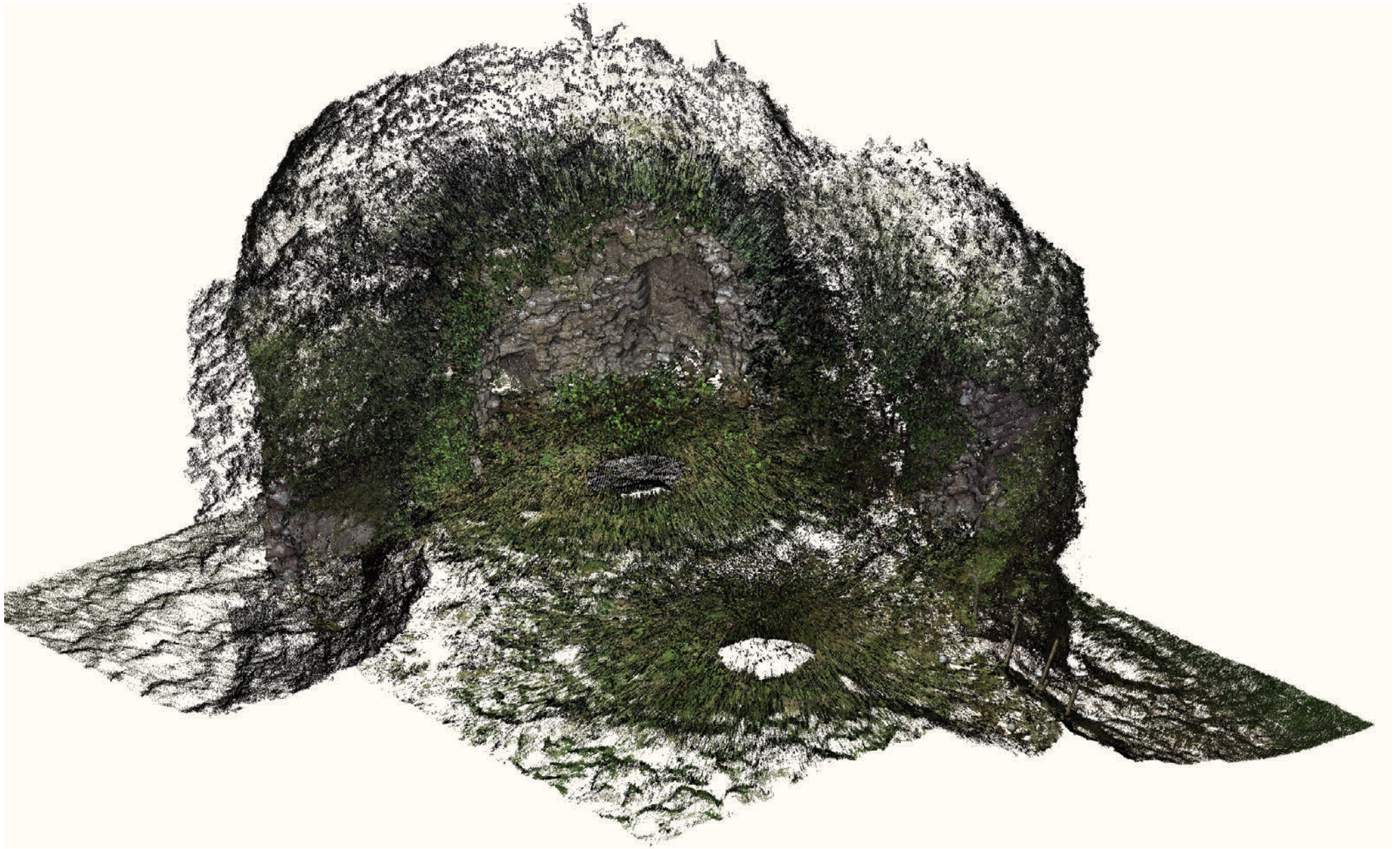


Figure 26: Isometric view through Northeast tower, looking northeast





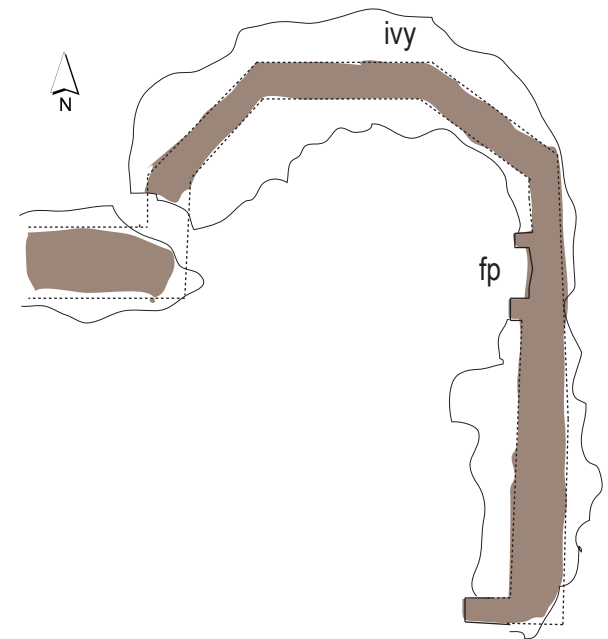
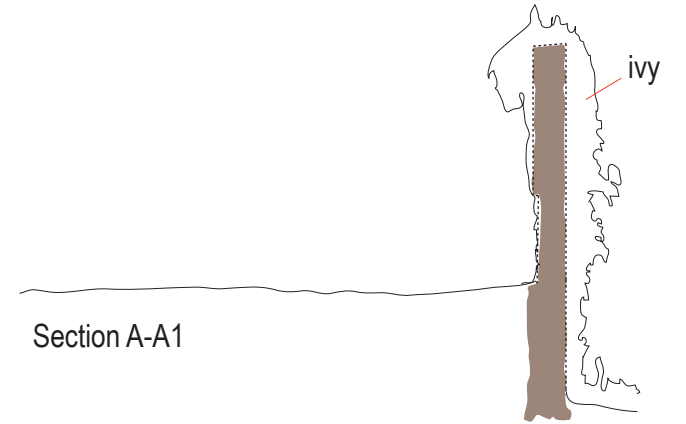
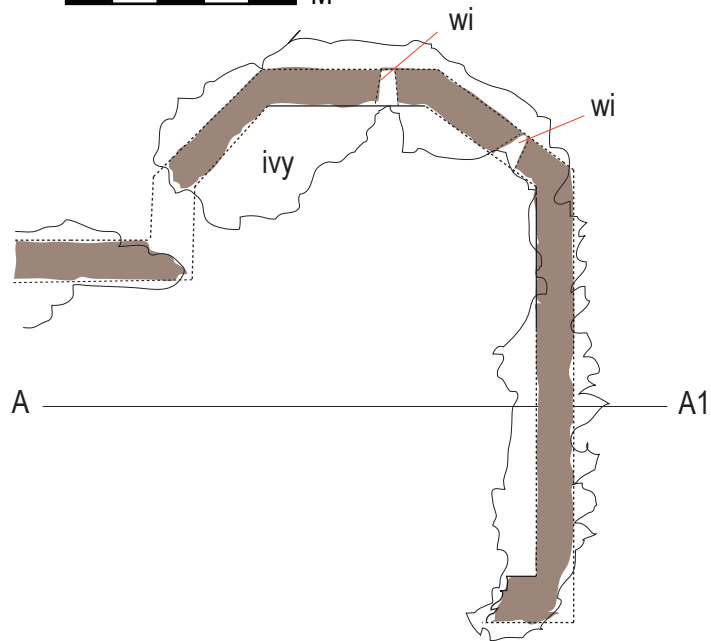
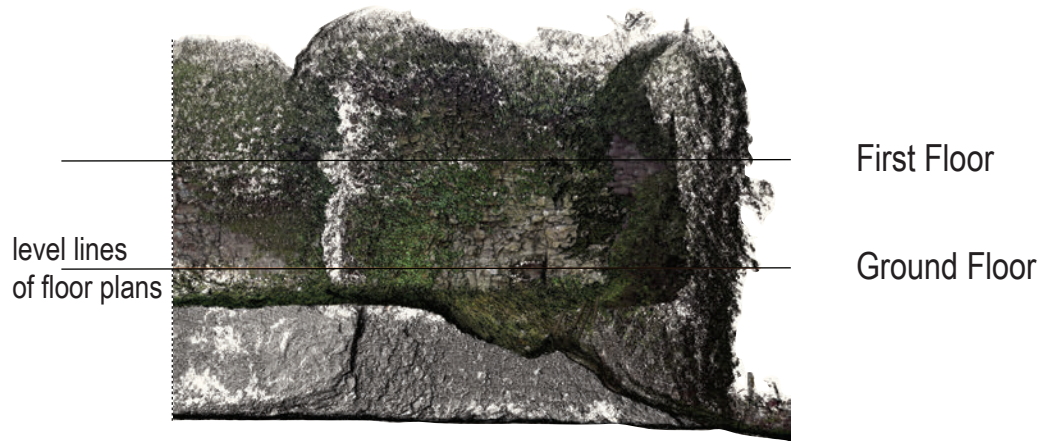


Figure 27: Northeast corner tower, floor plans and sections

Notes:  
fp - fireplace  
wi window

Wall thicknesses need to be checked  
due to ivy growth

North-facing

East-facing



north perimeter wall

northeast corner tower

First floor

Ground floor

wi

wi

fp

Notes:  
fp - fireplace  
wi window

Figure 28: Ortho images showing north and east walls of Northeast tower





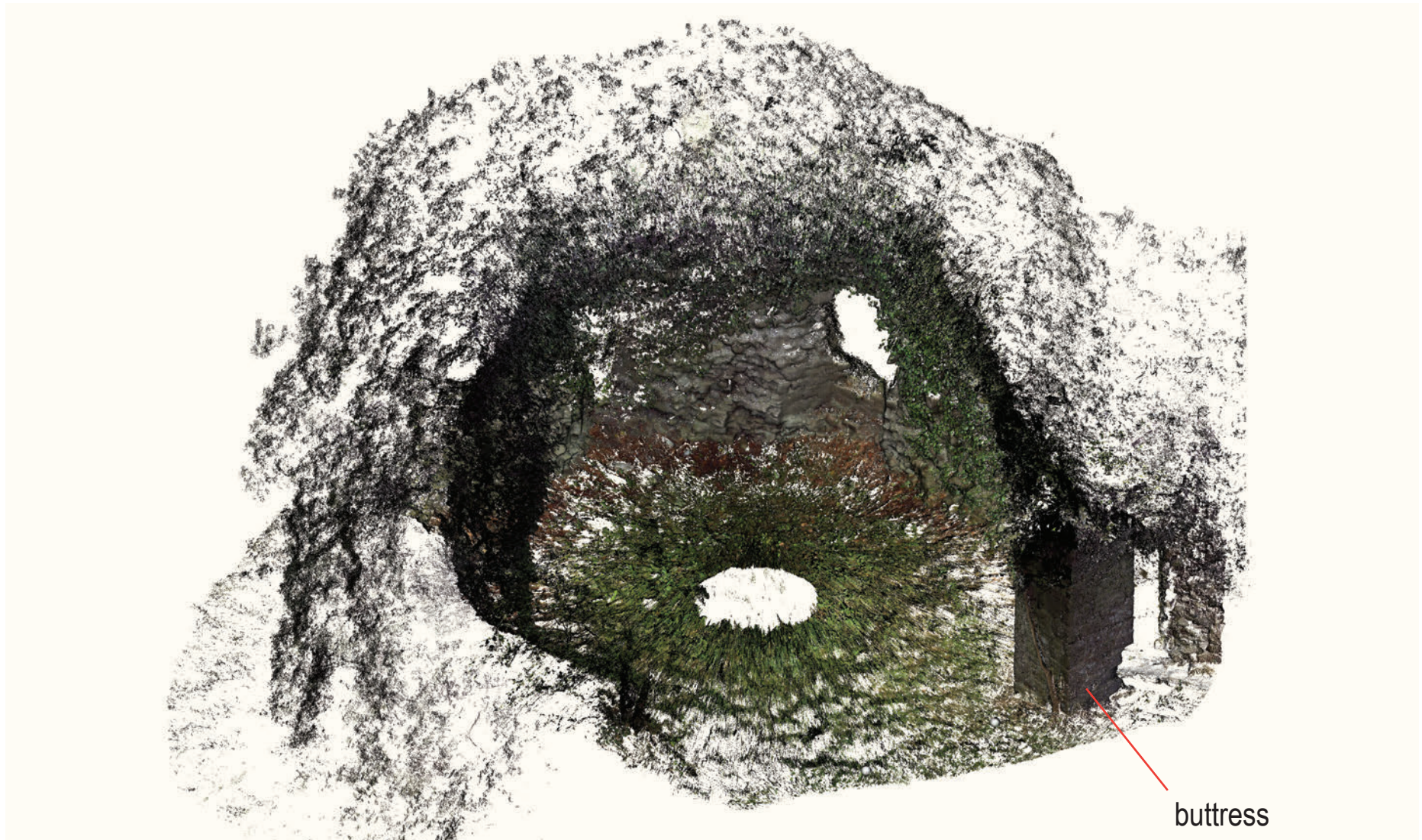


Figure 29: Isometric view through Southeast tower, looking southeast



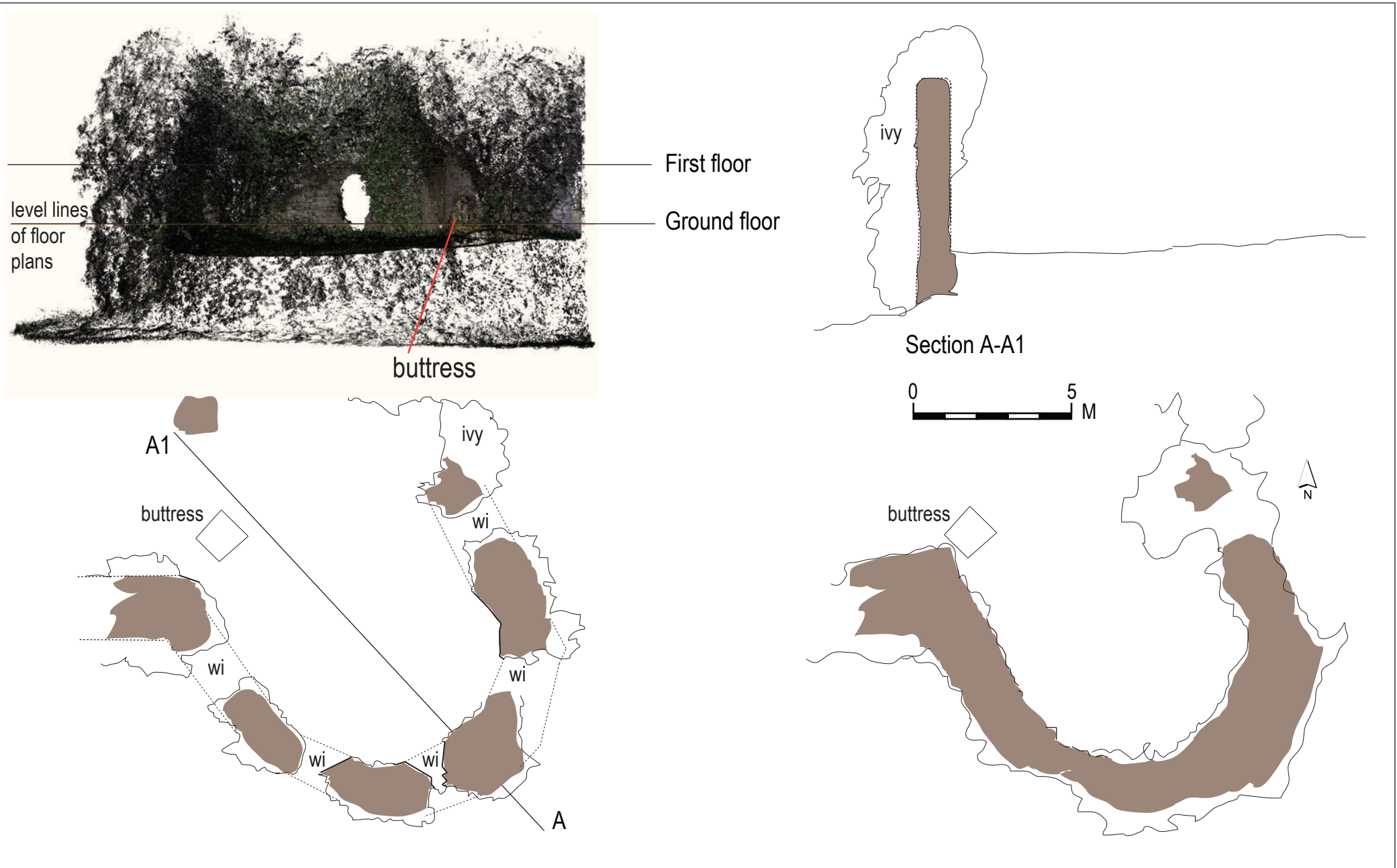


Figure 30: Southeast corner tower, floor plans and section

Notes:  
wi window

Wall thicknesses need to be checked  
due to ivy growth



**East-facing**



First  
floor

Ground  
floor

**South-facing**



First  
floor

Ground  
floor

**Southwest-facing**



buttress

Figure 31: Ortho images showing east and south walls of Southeast tower

Notes:  
wi window/gun loop opening



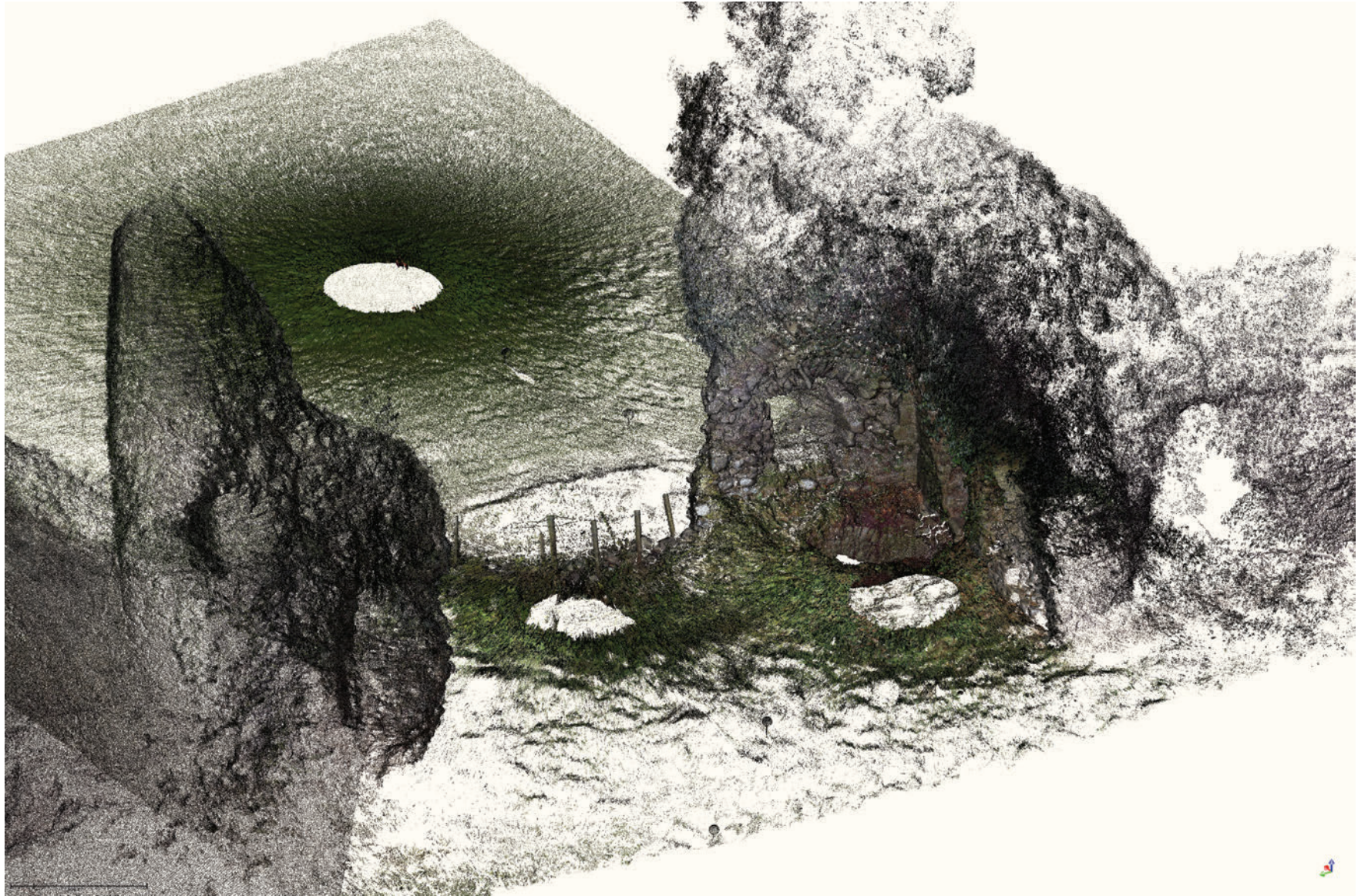


Figure 32: Isometric view through eastern entrance, looking out southeast





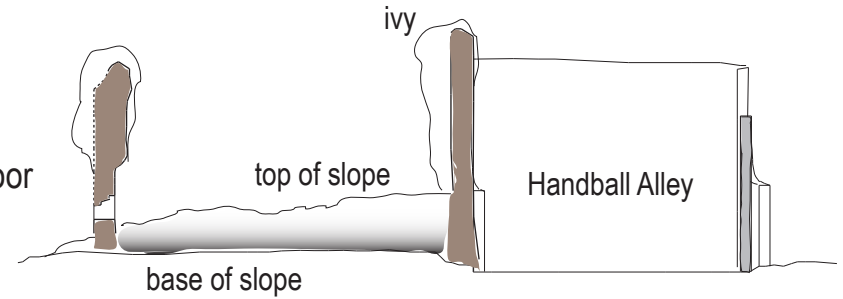


level lines  
of floor  
plans

First Floor

Ground Floor

Basement



base of slope

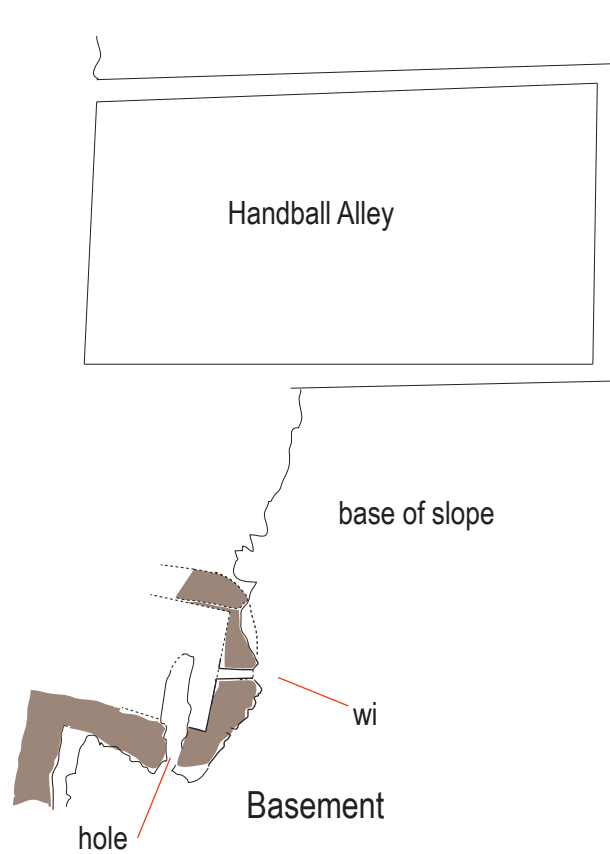
top of slope

Handball Alley

ivy

West-facing elevation, showing slice lines of floor plans

Cross Section A-A1



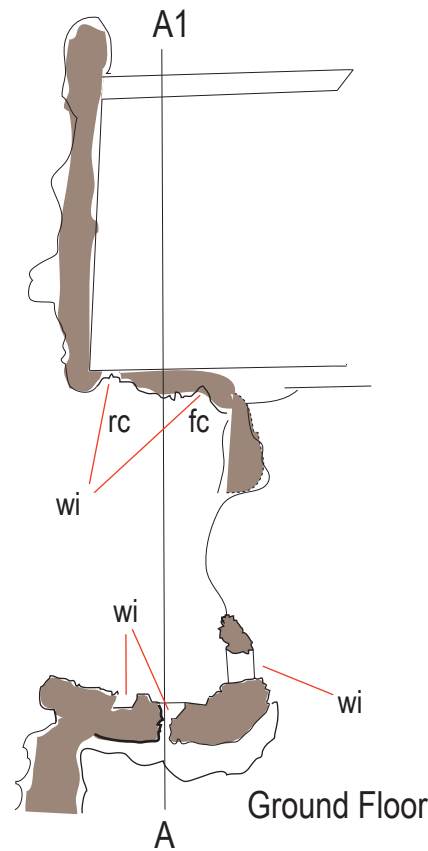
Handball Alley

base of slope

wi

Basement

hole



A1

rc

fc

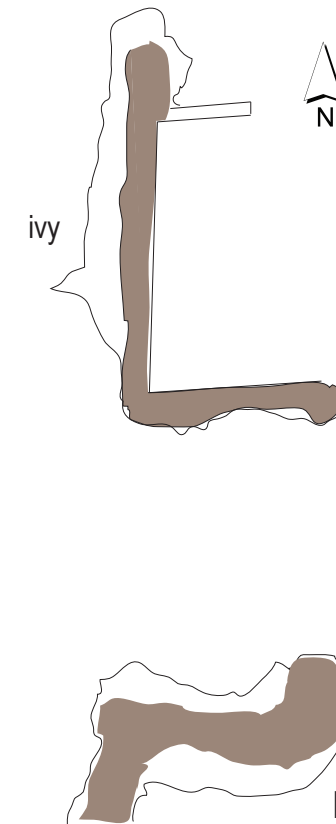
wi

wi

wi

Ground Floor

A



ivy



N

First Floor

Figure 33: Eastern entrance towers, floor plans and section

Notes:

fc - front chamber

rc - rear chamber

wi - window/gun loop opening

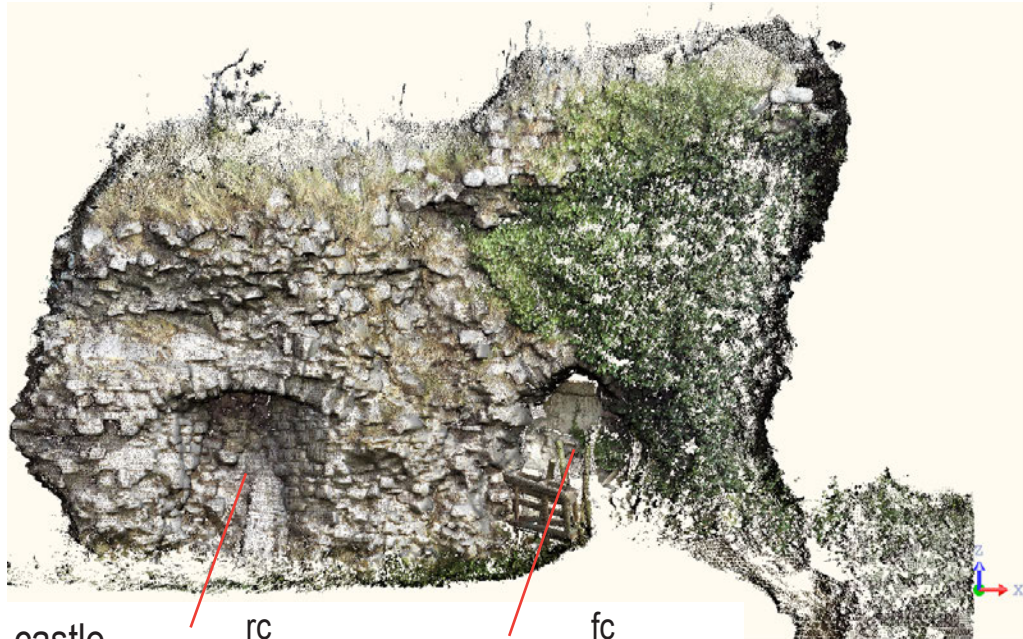
0



20

M

### North-facing



castle interior

wi

rc

wi

fc

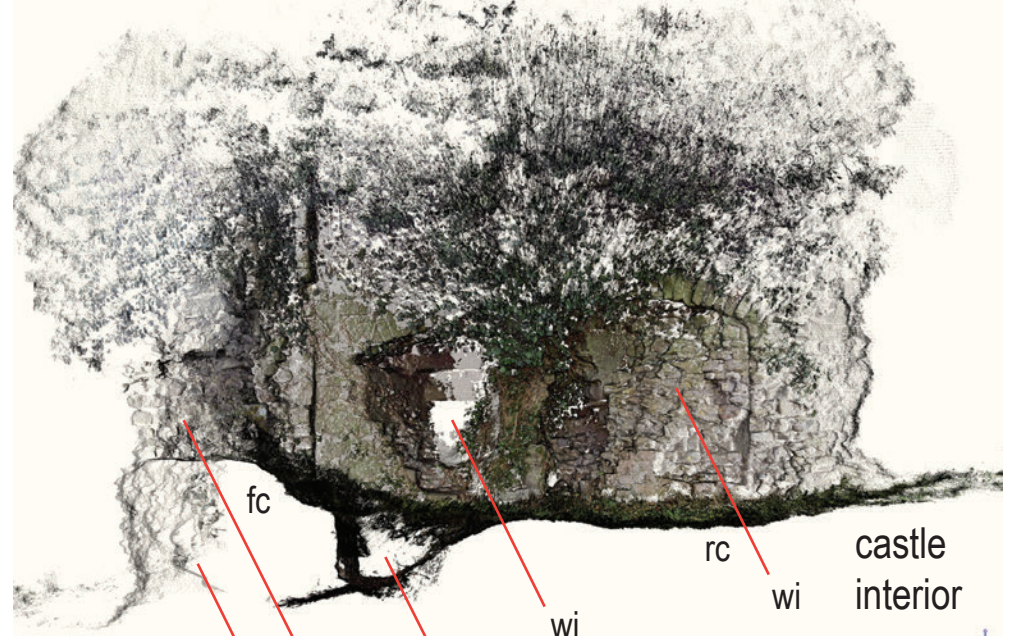
castle exterior

0

5

M

### South-facing



fc

wi

hole

wi

rc

wi

castle interior

castle exterior

wi (basement level)

Figure 34: Ortho images showing internal perspectives of eastern entrance

Notes:

fc - front chamber

rc - rear chamber

wi - window/gun loop opening